



FIRE PUMPS & SYSTEMS PRESENTATION

2023/2024



ebitt

GROUP OF COMPANIES





About Us

EBITT Group of Companies are focused on a product and service concept that makes difference in the fluid technology, providing added value to its customers.

EBITT has a range of products from basis appliance and systems to process-specific equipment in the fields where water and fluid technology are used; such as houses, industrial plants, service buildings and facilities, agriculture, irrigation, swimming pools, treatment facilities, and process specific needs.

EBITT Group of Companies integrated its production, sales and service, storage and logistics facilities with its companies in Asia, Turkey, Hungary and Italy to provide the most efficient technology to customers at the global scale with the most affordable price, in the shortest time and to assure the customer of its support after sales.

The EBITT Group of Companies are besides you, wherever you are in the world, with new companies it will establish in new locations in addition to the existing ones, and with regional solution partners.

EBITT Group Of Companies



HUNGARY
Factory

EBITT EUROPE KFT
export@ebitteurope.com
www.ebitteurope.com



TÜRKİYE
Factory

EBITT TURKEY
info@ebitt.com.tr
www.ebitt.com.tr



DUBAI / UAE
Factory

EBITT EMEA (UAE/DUBAI)
info@ebitt.com.tr



SINGAPORE
Office

EBITT ASIA PACIFIC PTE
LTD (EAP Singapore)
info@ebitt-asiapac.com

Where EBITT Export To



EBITT's Core Values

Experienced
Within 30 Years

1

Smart Stock Management

2

Fast Delivery

3

High Quality & World
Standards Certification

4

Wide Product Range

5

Innovative Design &
Engineering

6

After Sales Service & Start-
Up & Spare Parts

**EBITT
FIRE
PUMPS**



EBITT FIRE PUMPS

1

EBITT
UL + FM
SETS

2

EBITT
UL + EN
SETS

3

EBITT
AU... - EN
12845,
NFPA SETS

4

EBITT
U... SETS

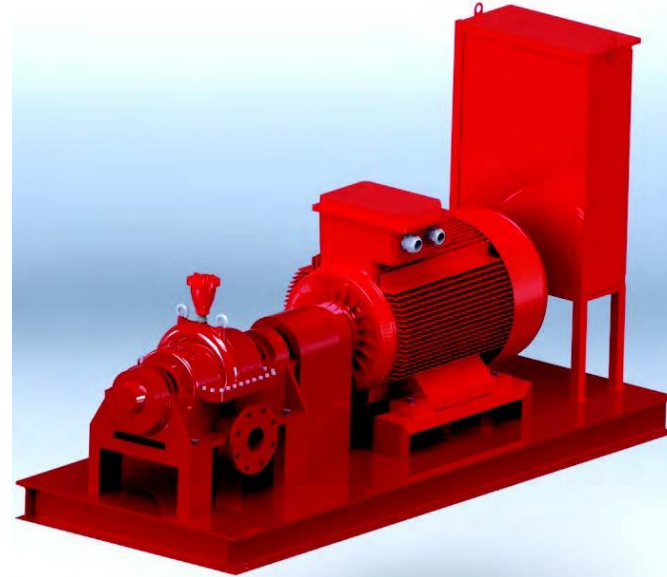
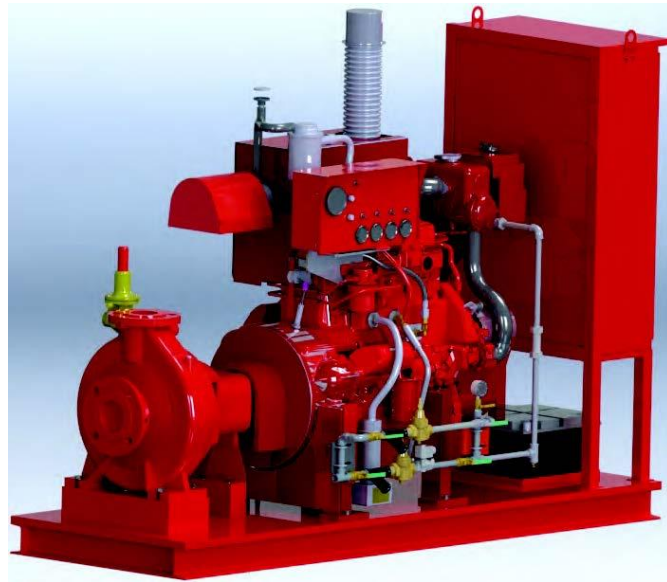
5

EBITT
DOMOFIRE
SETS

6

EBITT FIRE
BOOSTER
SETS

**EBITT UL+FM
SETS**



**Electric + Electric +
Jockey, or**

**Electric + Diesel +
Jockey executions.**

**Flow: 50 GPM up to
3000 GPM**

**Rated Pressure: From
71 PSI up to 304 PSI**

**Working Pressure:
375 PSI**

**EBITT UL
LISTED END
SUCTION
(50 HZ)**

FLOW (GPM)	MAX. WORKING PRESSURE (kPa)	MODEL
50	204	N 32-250
100	204	N 32-250
150	204	N 32-250
200	217	N 50-260
250	217	N 50-260
300	232	N 65-260
400	232	N 65-260
450	232	N 65-260
500	203	N 80-250
500	270	N 80-315
750	189	N 100-250
750	247	N 100-315
1000	189	N 100-250
1000	290	N 100-330
1250	246	N 150-315
1500	259	N 125-330
2000	321	N 150-330

**EBITT UL
LISTED END
SUCTION
(60 HZ)**

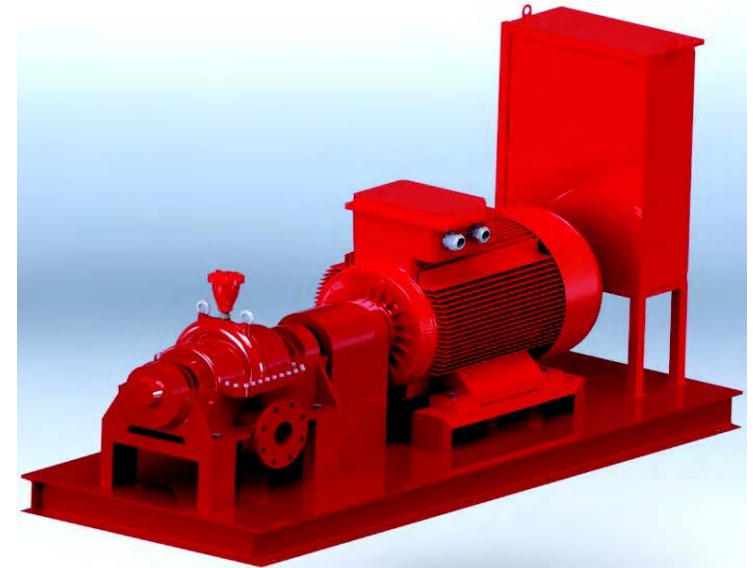
FLOW (GPM)	MAX. WORKING PRESSURE (kPa)	MODEL
50	239	N 40-270
100	239	N 40-270
150	239	N 40-270
200	239	N 80-270
300	239	N 80-270
400	239	N 80-270
500	239	N 80-270
500	270	N 100-270
750	270	N 100-270
1000	270	N 100-270

**EBITT UL
LISTED SPLIT
CASE (50 HZ)**

FLOW (GPM)	MAX. WORKING PRESSURE (kPa)	MODEL
500	232	SCP 100-250
500	400	SCP 100-400
750	232	SCP 100-250
750	400	SCP 100-400
1000	232	SCP 100-250
1000	232	SCP 125-320
1000	348	SCP 125-390
1250	290	SCP 125-300
1250	348	SCP 125-390
1500	290	SCP 125-300
1500	320	SCP 150-355
2000	232	SCP 150-300
2000	320	SCP 150-355
2000	246	SCP4 150-630
2500	290	SCP4 150-630F
3000	290	SCP4 150-630F

**ELECTRICAL
MOTOR
PROPERTIES**

- **MOTOR BRAND:**
REGAL/MARATHON
- **MOTOR APPROVE:**
UL LISTED
- **MOTOR START:**
WYE-DELTA STARTING
- **MOTOR PROPERTIES:**
IP 55
- **MOTOR PROPERTIES:**
TEFC/ODP TYPE
- **INCLUDED ACCESORIES:**
INLET-OUTLET MANOMETERS
- **INCLUDED ACCESSORIES:**
AIR RELEASE VALVE (FOR SPLIT CASE PUMPS)



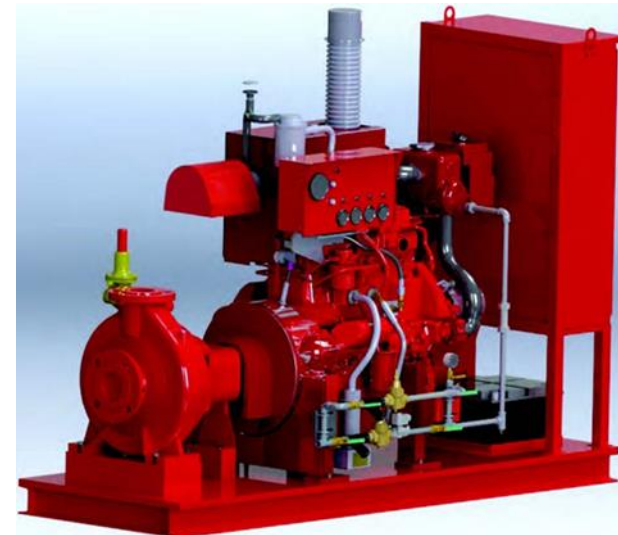
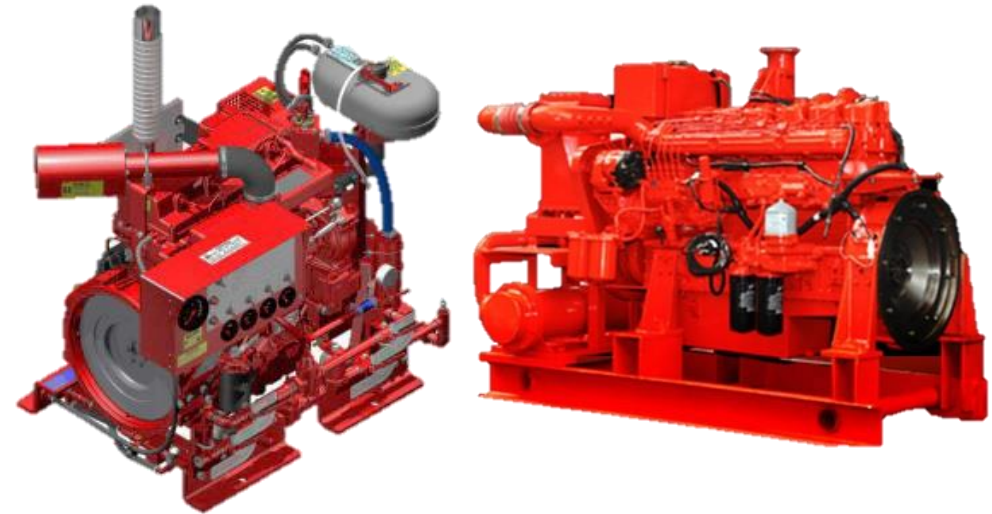
ELECTRICAL CONTROLLER PROPERTIES

- **BRAND:**
TORNATECH
- **APPROVE:**
UL LISTED / FM APPROVED
- **SERIES:**
GPY – GPY+GPU
- **PROPERTIES:**
WYE-DELTA STARTING – DOL START - ATS
- **PROPERTIES:**
COMPLETE WITH PRESSURE SENSOR



DIESEL ENGINE PROPERTIES

- **DIESEL ENGINE BRAND:**
CLARKE UK / KIRLOSKAR
- **DIESEL ENGINE APPROVE:**
UL LISTED / FM APPROVED
- **SET PROPERTIES:**
2 RE-CHARGEABLE BATTERIES
- **SET PROPERTIES:**
EXHAUST SILENCER
- **SET PROPERTIES:**
ELECTRICAL HEATER
- **SET PROPERTIES:**
INTERNAL COOLING LOOP
EXCHANGER COOLED ENGINES
- **SET PROPERTIES:**
DIESEL FUEL TANK
- **INCLUDED ACCESORIES:**
INLET-OUTLET MANOMETERS
- **INCLUDED ACCESSORIES:**
AUTOMOATIC AIR RELEASE VALVE



DIESEL CONTROLLER PROPERTIES

- **BRAND:**
TORNATECH
- **APPROVE:**
UL LISTED / FM APPROVED
- **SERIES:**
GPD
- **PROPERTIES:**
DIESEL OIL, TEMPRATURE INDICATORS
- **PROPERTIES:**
DOUBLE BATTERY CHARGER SYSTEM
- **PROPERTIES:**
COMPLETE WITH PRESSURE SENSOR



JOCKEY PUMPS

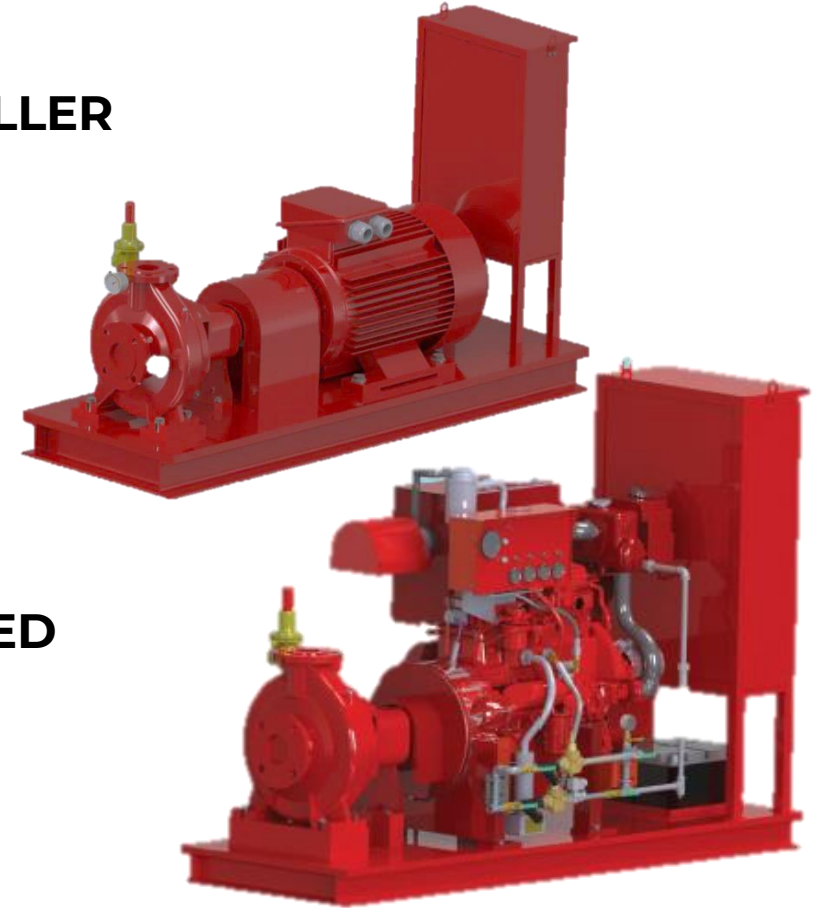
- **PUMP:**
STAINLESS STEEL VERTICAL MULTISTAGE
- **CASING:**
AISI304 STAINLESS STEEL
- **IMPELLER:**
AISI304 STAINLESS STEEL
- **SHAFT:**
AISI304 STAINLESS STEEL
- **SEALING:**
HARD METAL / CARBON / EPDM
- **MOTOR PROPERTIES:**
IP 55
- **CONTROLLER BRAND:**
TORNATECH UL LISTED



EBITT UL-EN SETS

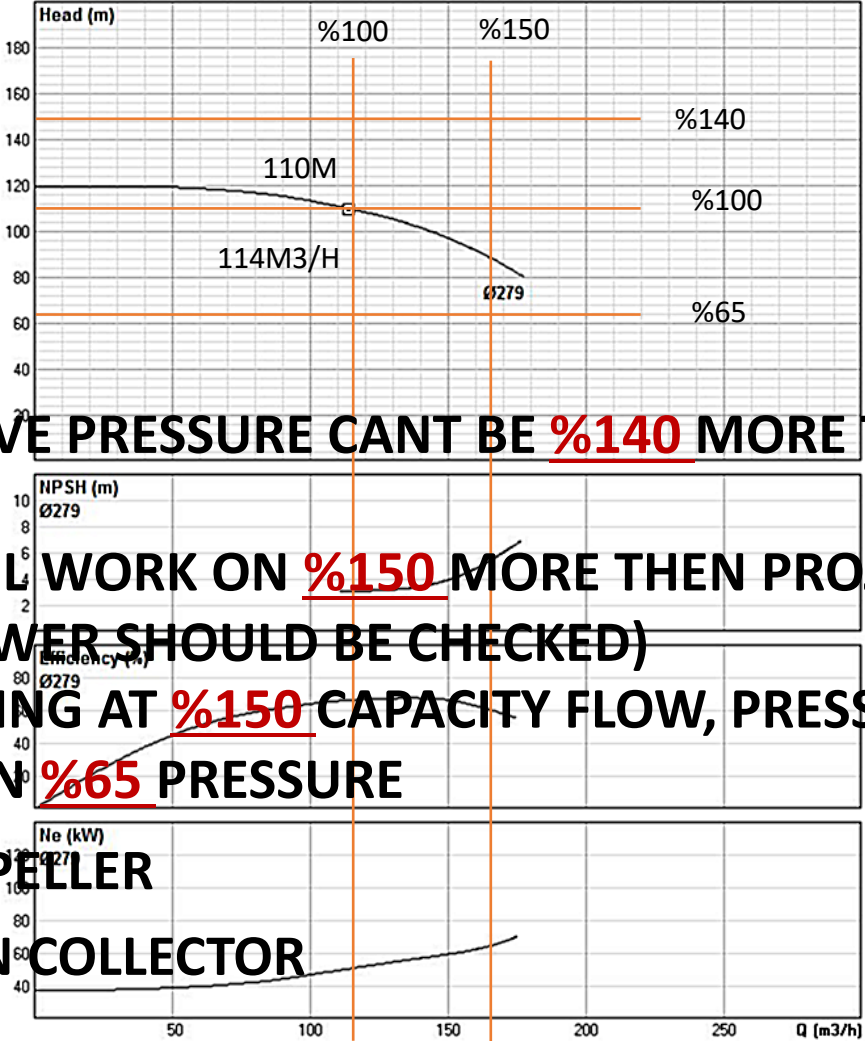
UL+EN SETS
PROPERTIES

- **PUMP:**
EBITT-UL LISTED
 - **END-SUCTION**
 - **SPLIT CASE**
 - **GCuSn10-BRONZE OR ST. STEEL IMPELLER**
- **ELECTRIC MOTOR:**
EBITT – CE APPROVED, IE2, IE3
- **ELECTRIC CONTROLLER:**
EBITT – EN12845 APPROVED
- **DIESEL ENGINE:**
CLARKE – MITSUBISHI –EN12845 APPROVED
- **DIESEL PANEL:**
EBITT – EN12845 APPROVED
- **JOCKEY SET:**
EBITT – CE APPROVED



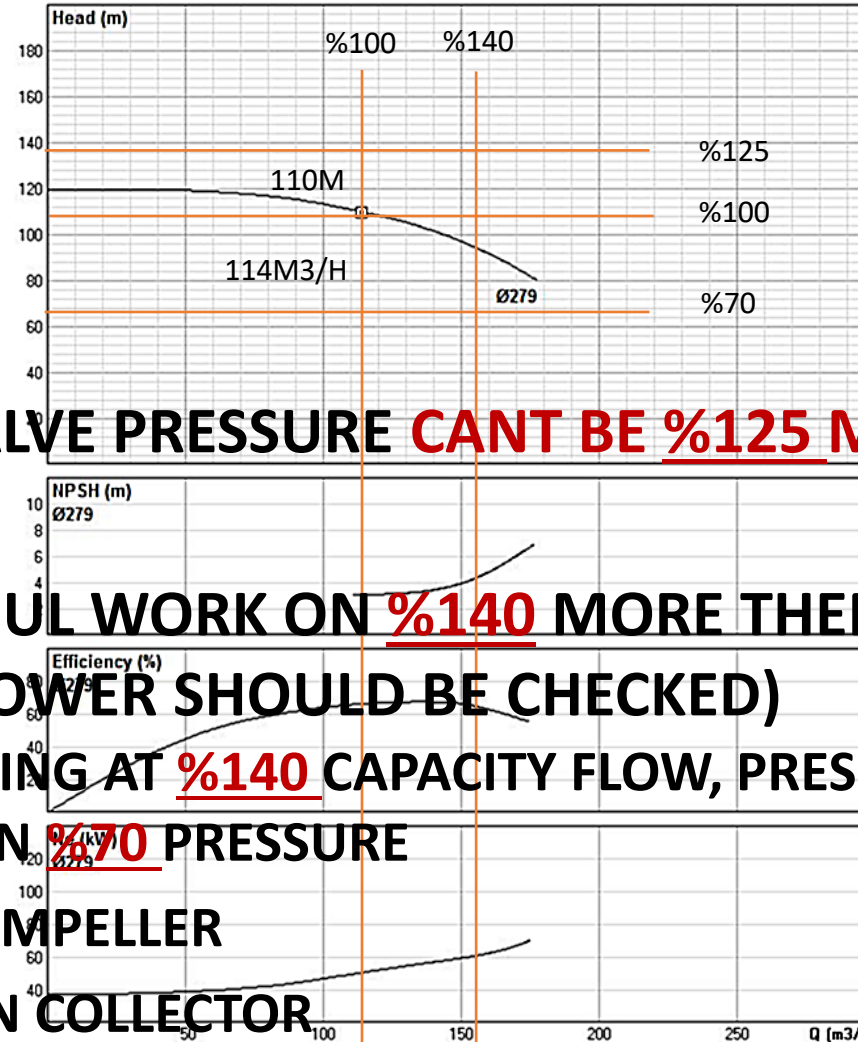
NFPA GENERAL SPECIFICATIONS

EBITT NFPA SPECIFICATIONS



- CLOSED VALVE PRESSURE CANT BE **%140** MORE THEN PROJECT PRESSURE
- PUMP SHOULD WORK ON **%150** MORE THEN PROJECT FLOW (MOTOR POWER SHOULD BE CHECKED)
- WHEN WOKING AT **%150** CAPACITY FLOW, PRESSURE SHOULDNT BE LESS THEN **%65** PRESSURE
- BRONZE IMPELLER
- NO SUCTION COLLECTOR

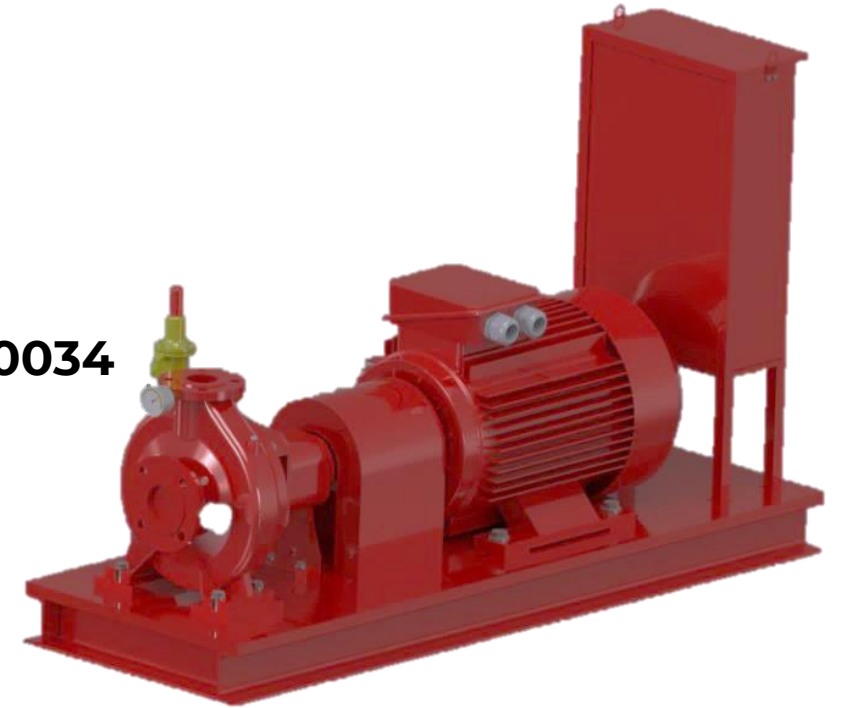
EN12845 GENERAL SPECIFICATIONS



- CLOSED VALVE PRESSURE **CANT BE %125 MORE** THEN PROJECT PRESSURE
- PUMP SHOULD WORK ON **%140 MORE** THEN PROJECT FLOW (MOTOR POWER SHOULD BE CHECKED)
- WHEN WOKING AT **%140 CAPACITY** FLOW, PRESSURE SHOULDNT BE LESS THEN **%70 PRESSURE**
- CAST IRON IMPELLER
- NO SUCTION COLLECTOR

**EBITT AUE
SERIES EN
12845 / NFPA**

- **PUMP:**
**EBITT-END SUCTION, SINGLE STAGED
BRONZE/CAST IRON
12/65 – 460/160 (m³/h / mWc)**
- **ELECTRIC MOTOR:**
EBITT – CE APPROVED, IE2, IE3, IP55,IEC 60034
- **ELECTRIC CONTROLLER:**
**EBITT – EN12845 APPROVED, IP55,CEI
STDSTAR-DELTA STARTING**



**EBITT AUD
SERIES EN
12845 / NFPA**

- **PUMP:**
**EBITT-END SUCTION, SINGLE STAGED
BRONZE/CAST IRON
12/65 – 460/140 (m³/h / mWc)**
- **DIESEL ENGINE:**
**CLARKE – MITSUBISHI – KAMA - EN12845
APPROVED**
- **DIESEL CONTROLLER:**
EBITT – EN12845 APPROVED
- **JOCKEY SET:**
EBITT – CE APPROVED



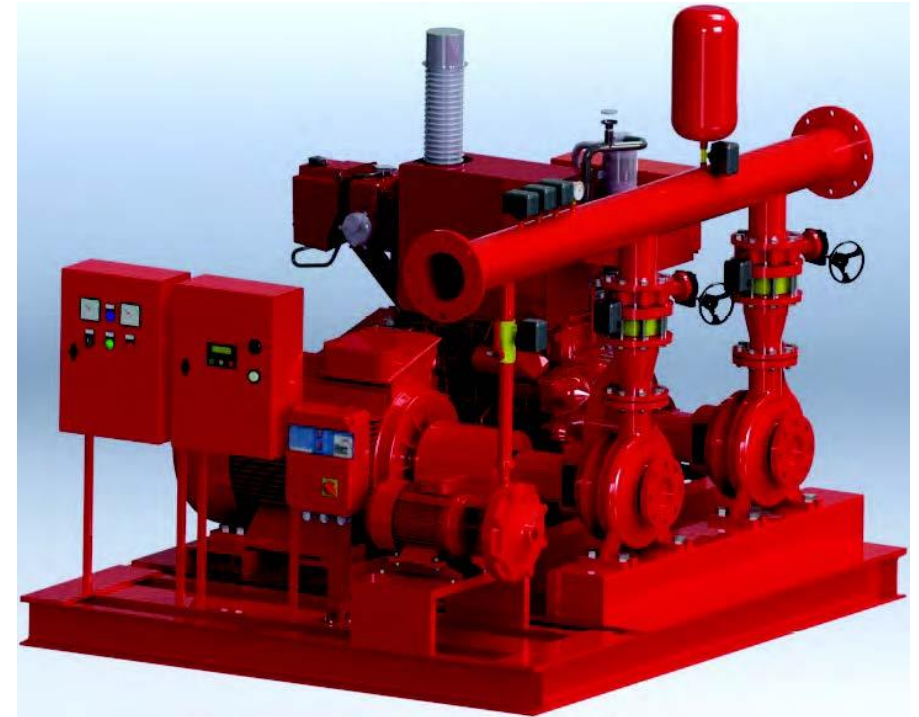
EBITT JOCKEY PUMPS

- **PUMP:**
STAINLESS STEEL VERTICAL MULTISTAGE
- **CASING:**
AISI304 STAINLESS STEEL
- **IMPELLER:**
AISI304 STAINLESS STEEL
- **SHAFT:**
AISI304 STAINLESS STEEL
- **SEALING:**
HARD METAL / CARBON / EPDM
- **MOTOR PROPERTIES:**
IP 55



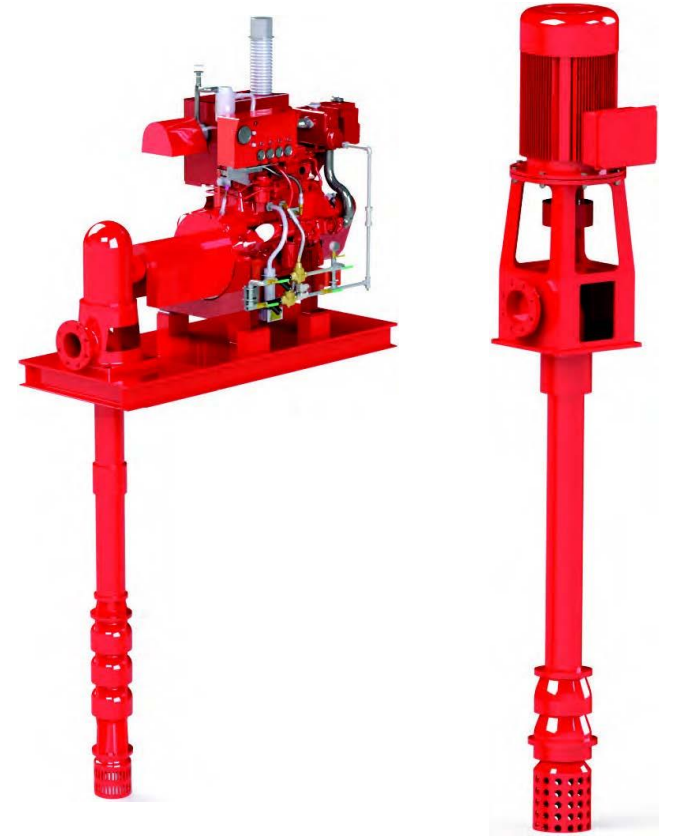
**EBITT AU...
SERIES EN
12845 / NFPA**

- **AU2E:
ELECTRIC+ELECTRIC+JOCKEY**
- **AUED:
ELECTRIC+DIESEL+JOCKEY**
- **AUE:
ELECTRIC+JOCKEY**
- **AUD:
DIESEL+JOCKEY**



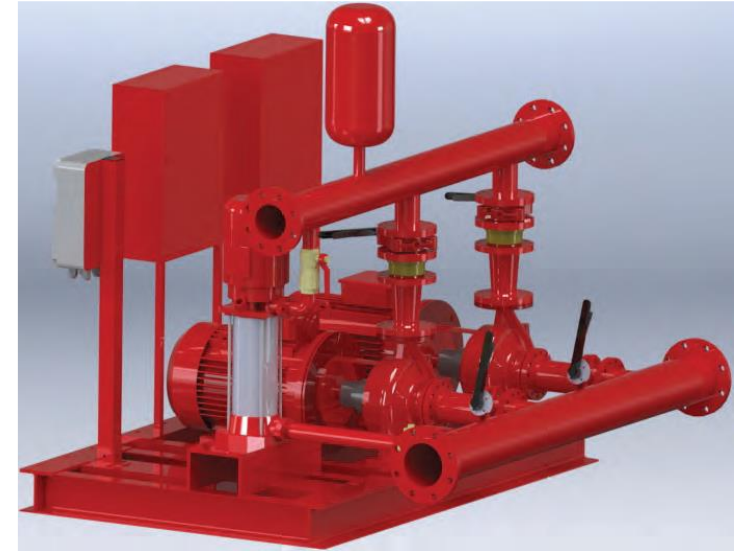
EBITT AU...
VAL SERIES
(Vertical
Turbine
Pumps)

- **Flow: 70 m³/h - 568 m³/h**
- **Constructed for automatic pressurization**
- **Working pressure: 16 bar**
- **Rated pressure range: up to 140 mWC**
- **Electric + Electric + Jockey, or Electric + Diesel + Jockey exc.**

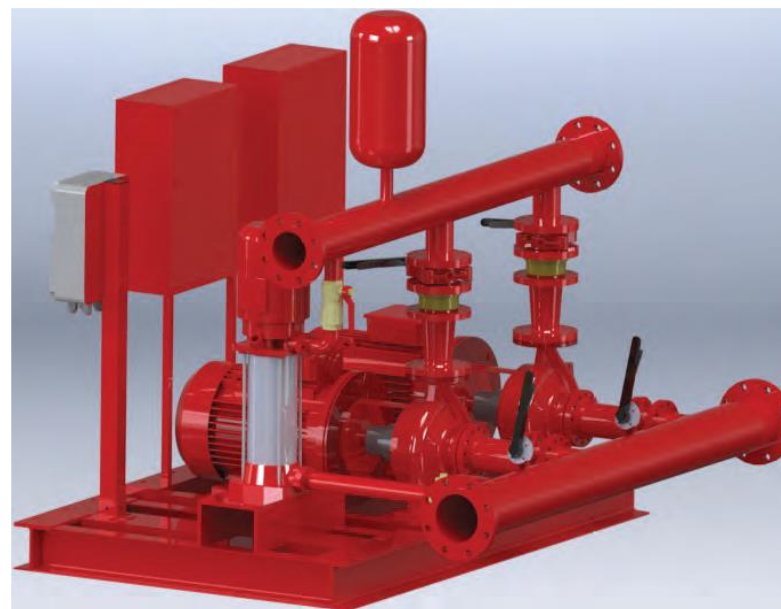


**EBITT
DOMOFIRE
SERIES**

- **PUMP:**
EBITT-END SUCTION, MONOBLOK CAST
IRON / STAINLESS STEEL
12/65 – 120/90 (m³/h / mWc)
- **ELECTRIC MOTOR:**
EBITT – CE APPROVED, IE2, IE3, IP55, IEC
STD
- **ELECTRIC PANEL:**
EBITT – CE APPROVED
- **DIESEL ENGINE:**
KAMA – CE APPROVED
- **DIESEL PANEL:**
EBITT – CE APPROVED
- **JOCKEY SET:**
EBITT – CE APPROVED



- **DOMOFIRE EE:**
ELECTRIC+ELECTRIC
- **DOMOFIRE EEJ:**
ELECTRIC+ELECTRIC+JOCKEY
- **DOMOFIRE ED:**
ELECTRIC+DIESEL
- **DOMOFIRE EDJ:**
ELECTRIC+DIESEL+JOCKEY



EBITT FIRE BOOSTER SETS

- **PUMP:**
EBITT-VERTICAL, MULTISTAGE,
STAINLESS STEEL
12/50 – 12/110 (m³/h / mWc)
- **ELECTRIC MOTOR:**
EBITT – CE APPROVED, IE2, IE3, IP55
- **ELECTRIC PANEL:**
EBITT – 2 PUMPS – CE APPROVED
- **JOCKEY SET:**
EBITT – CE APPROVED





EBITT EUROPE KFT H-6782 Mórahalom, Szegedi út 108. Hungary **Phone:** +3662-280-926 **Fax:** +3662-280-927 **export@ebitteurope.com** www.ebitteurope.com

EBITT ASIA PACIFIC PTE LTD (EAP Singapore) 226 Jalan Eunos #04-128. Singapore 415869 **Phone:** (65) 98393745 **info@ebitt-asiapac.com**

EBITT EMEA METEL INDUSTRIES LLC P.O. BOX 8735, Dubai, United Arab Emirates **Phone:** 971-4-3331148 **Fax:** 971-4-3331480

AQUASTRONG COMPANY LIMITED Via Bramante 3520154 Milano Italy **Phone:** +39 0294 759177 **Fax:** +39 0294 759177 **info@aquastrong.it**

EBITT TÜRKİYE Koçullu Mah. Doğru Sok. No:6 34799 Çekmeköy / İstanbul **info@ebitt.com.tr** www.ebitt.com.tr

