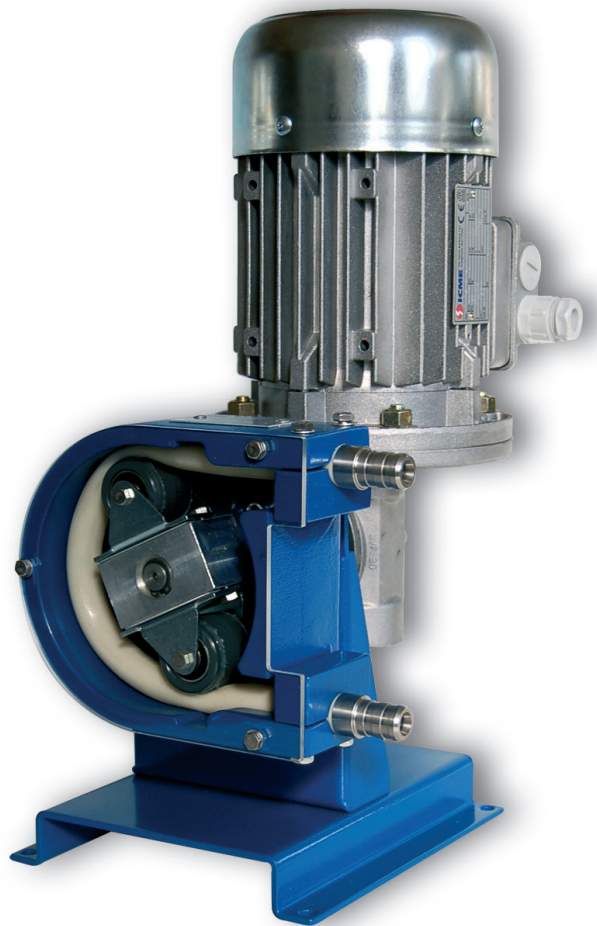


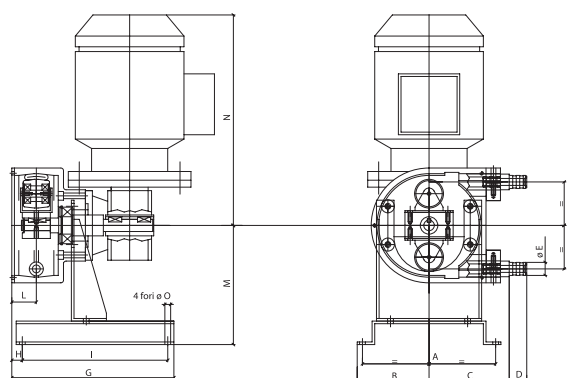
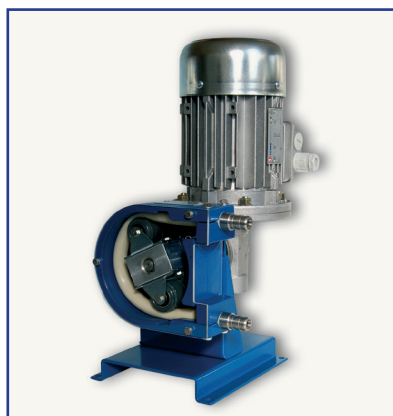
fluimac[®]
p u m p s o l u t i o n



HELIOS
PERISTALTIC PUMPS

Made in
Italy

www.fluimac.com



OVERALL DIMENSIONS MM AND WEIGHT

TYPE	A	B	C	D	E	F	G	H	I	L	M	N	øO	Kg.
AS 10 FX	152	82	92	20	15	104	185	12	166	28	137	271	7	7
AS 15 FX	172	92	110	20	20	127	185	12	166	30	137	271	7	9
AS 20 FX	210	112	142	35	25	175	248	18	220	40	184	170	7	15
AS 25 FX	250	160	210	45	32	254	377	72	290	53	220	217	11	40

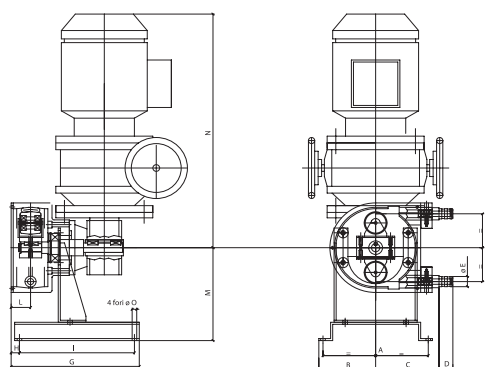
TECHNICAL CHARACTERISTICS

TYPE	Q (L/H)	A	P	RPM	I	KW	di	Qu	N
AS 10 FX	23	4	15	23	60	0,18	9	0,017	6
	35	4	15	35	40	0,18			
	47	4	15	47	30	0,18			
	70	4	15	70	20	0,18			
	93	4	15	93	15	0,18			
AS 15 FX	56	4	15	23	60	0,18	13	0,041	12
	86	4	15	35	40	0,18			
	115	4	15	47	30	0,18			
	172	4	15	70	20	0,18			
	228	4	15	93	15	0,18			
AS 20 FX	149	5	* 15 - 40	23	60	0,18	17	0,108	20
	227	5	* 15 - 40	35	40	0,18			
	305	5	* 15 - 30	47	30	0,18			
	453	5	* 15 - 30	70	20	0,18			
	602	5	* 10 - 20	93	15	0,18			
AS 25 FX	149	6	* 20 - 40	28	60	0,37	25	0,32	30
	538	6	* 20 - 40	35	40	0,37			
	672	6	* 20 - 30	47	30	0,37			
	902	6	* 20 - 30	70	20	0,75			
	1344	6	* 15 - 25	93	15	0,75			

MOTOR 3 PH - VOLTS 230/400 HZ 50 R.P.M. I400 IP55

* = according to hose compound
 A = suction pressure in m
 P = discharge pressure in m

di = inn. diam. pump hose mm
 Qu = litres for revolution
 Nm = min. start. torque



OVERALL DIMENSIONS MM AND WEIGHT

TYPE	A	B	C	D	E	F	G	H	I	L	M	N	ØO	Kg.
AS 10 VX	152	82	92	20	15	104	185	12	166	28	137	271	7	7
AS 15 VX	172	92	110	20	20	127	185	12	166	30	137	271	7	9
AS 20 VX	210	112	142	35	25	175	248	18	220	40	184	170	7	19
AS 25 VX	250	145	210	45	32	254	377	72	290	53	220	217	11	40

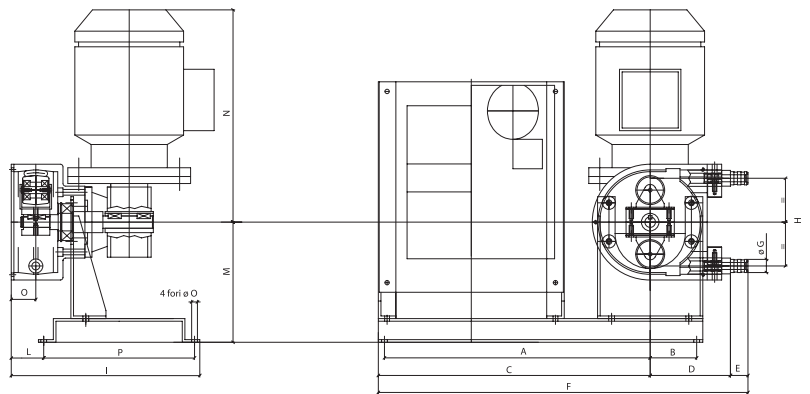
TECHNICAL CHARACTERISTICS

TYPE	Q (L/H)	A	P	RPM	I	KW	di	Qu	Nm
AS 10 VX	3,2 - 15	4	15	3,2 - 15	60	0,22			
	4,7 - 22,5	4	15	4,7 - 22,5	40	0,22			
	6,3 - 30	4	15	6,3 - 30	30	0,22	9	0,017	6
	9,5 - 45	4	15	9,5 - 45	20	0,22			
	19 - 90	4	15	19 - 90	10	0,22			
AS 15 VX	7,8 - 37	4	15	3,2 - 15	60	0,22			
	11,6 - 55	4	15	4,7 - 22,5	40	0,22			
	15,5 - 73,8	4	15	6,3 - 30	30	0,22	13	0,041	12
	23,4 - 110	4	15	9,5 - 45	20	0,22			
	47 - 221	4	15	19 - 90	10	0,22			
AS 20 VX	21 - 97	5	* 15 - 40	3,2 - 15	60	0,22			
	30 - 146	5	* 15 - 30	4,7 - 22,5	40	0,22			
	41 - 194	5	* 15 - 30	6,3 - 30	30	0,22	17	0,108	20
	62 - 291	5	* 15 - 25	9,5 - 45	20	0,22			
	82 - 388	5	* 10 - 20	12,7 - 60	15	0,22			
AS 25 VX	73 - 365	6	* 20 - 40	3,8 - 19	60	0,37			
	90 - 455	6	* 20 - 40	4,7 - 23,7	40	0,37			
	121 - 608	6	* 20 - 35	6,3 - 31,7	30	0,37	25	0,32	30
	182 - 912	6	* 20 - 30	9,5 - 47,5	20	0,75			
	243 - 1280	6	* 15 - 25	12,7 - 66,7	15	0,75			

MOTOR 3 PH - VOLTS 230/400 HZ 50 R.P.M. I400 IP55

* = according to hose compound
 A = suction pressure in m
 P = discharge pressure in m

di = inn. diam. pump hose mm
 Qu = litres for revolution
 Nm = min. start. torque



OVERALL DIMENSIONS MM AND WEIGHT

TYPE	A	B	C	D	E	F	G	H	I	I	L	M	N	øO	Kg.
AS 10 IX	303	53	310	92	20	422	15	104	210	32	137	255	28	172	10
AS 15 IX	318	68	325	110	20	455	20	127	210	32	137	255	30	172	12
AS 20 IX	348	94	358	142	35	535	25	175	245	27	184	268	40	210	18
AS 26 IX	375	125	395	210	45	650	32	254	377	72	220	326	53	290	45

TECHNICAL CHARACTERISTICS

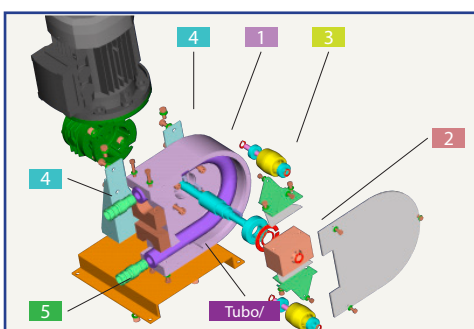
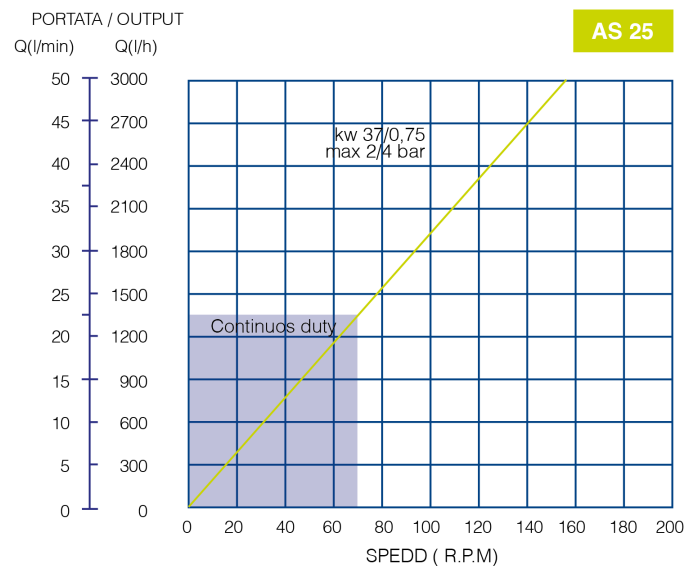
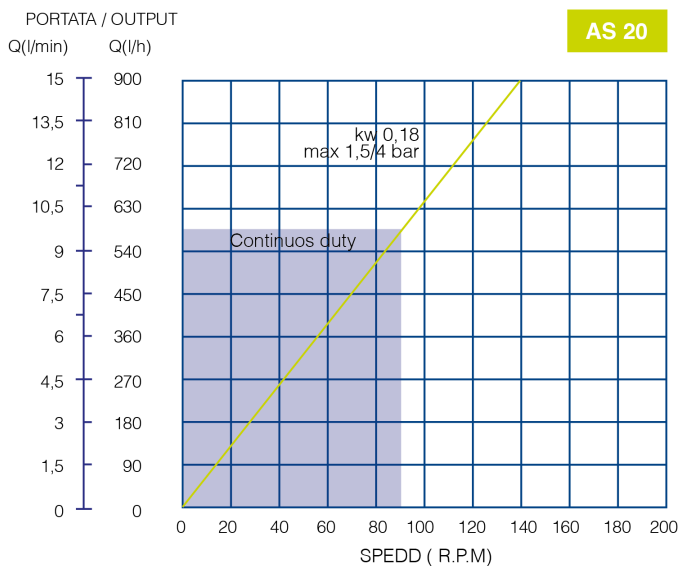
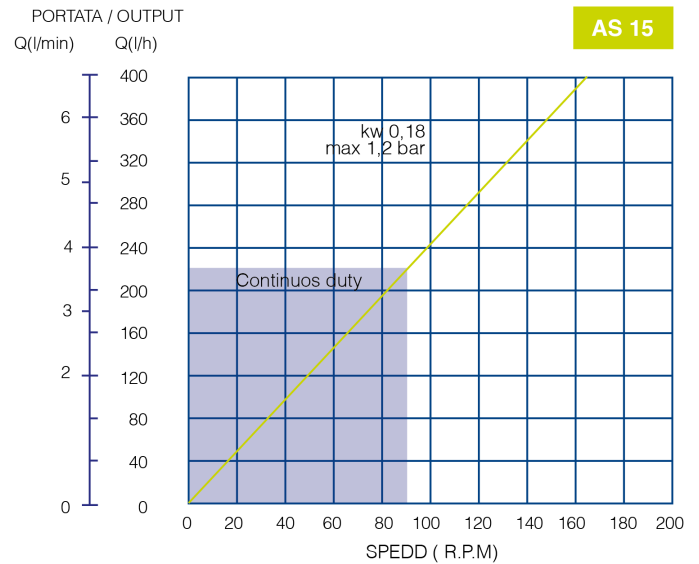
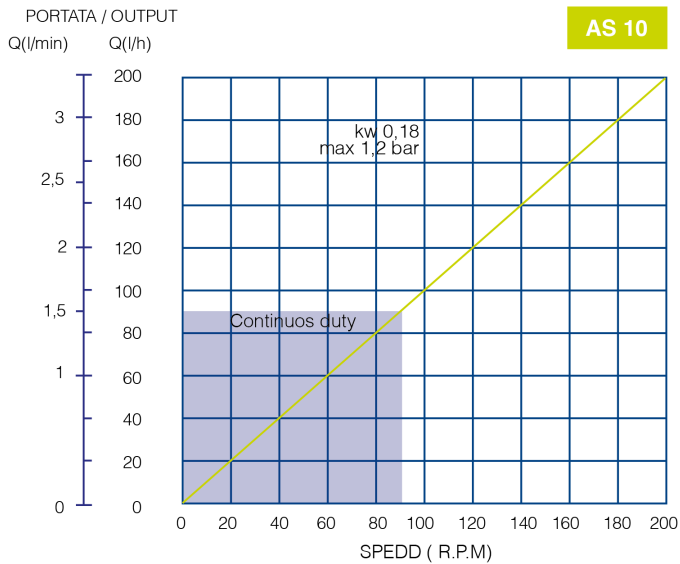
TYPE	Q (L/H)	A	P	RPM	I	KW	di	Qu	Nm
AS 10 IX	1,5 ÷ 47	4	15	1,5 ÷ 47	60	0,18	9	0,017	6
	3 ÷ 93	4	15	3 ÷ 93	30	0,18			
	6 ÷ 185	4	10	6 ÷ 185	15	0,18			
AS 15 IX	3,7 ÷ 115	4	15	1,5 ÷ 47	60	0,18	13	0,041	2
	7 ÷ 172	4	15	2,8 ÷ 70	40	0,18			
	15 ÷ 345	4	10	6 ÷ 140	20	0,18			
AS 20 IX	10 ÷ 304	5	* 15 - 30	1,5 ÷ 47	60	0,18	17	0,108	20
	18 ÷ 453	5	* 15 - 30	2,8 ÷ 70	40	0,18			
	20 ÷ 602	5	* 15 - 20	3 ÷ 93	30	0,18			
AS 25 IX	29 ÷ 902	6	* 20 - 30	1,5 ÷ 47	60	0,37	25	0,32	30
	54 ÷ 1344	6	* 20 - 30	2,8 ÷ 70	40	0,55			
	58 ÷ 1785/1785	6	* 20 - 25	3 ÷ 93/1785	30	0,75			

MOTOR 3 PH - VOLTS 230/400 HZ 50 R.P.M. I400 IP55

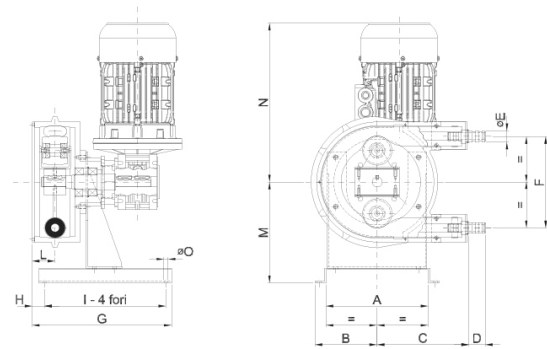
* = according to hose compound
 A = suction pressure in m
 P = discharge pressure in m

di = inn. diam. pump hose mm
 Qu = litres for revolution
 Nm = min. start. torque

PERFORMANCE CURVES



- | | | |
|---|--------------------|---------------------|
| 1 | Pump casing | aluminium alloy |
| 2 | Rotor | aluminium alloy |
| 3 | Rollers | PVC |
| | As 25 | aluminium alloy |
| 4 | Base | iron |
| 5 | Standard couplings | 304 stainless steel |
| | Special couplings | 316 stainless steel |
| | DIN, TRI-CLAMPS, | PVC |
| | ANSI, ecc. | PTFE |



OVERALL DIMENSIONS MM AND WEIGHT

TYPE	A	B	C	D	E	F	G	H	I	L	M	N	øO	Kg.
ASP 10 FX	210	112	169	25	15	167	251	21	220	40	184	271	7	16
ASP 15 FX	210	112	169	25	20	167	251	21	220	40	184	271	7	16
ASP 25 FX	250	170	224	45	32	240	491	55	400	52	245	170	11	44
ASP 32 FX	330	217	290	66	40	316	655	114	520	68	300	217	11	80
ASP 40 FX	420	270	340	73	50	398	735	130	580	74	370	270	14	120
ASP 50 FX	420	330	380	80	65	512	833	158	650	88	440	330	14	160
ASP 65 FX	566	440	510	91	80	672	1107	142	930	106	570	440	17	430

TECHNICAL CHARACTERISTICS

TYPE	Q (L/H)	A	P	RPM	I	KW	di	Qu	Nm
ASP 10 FX	47	8	100	23	60	0,18	10	0,034	35
	72	8	80	35	40	0,18			
	96	8	80	47	30	0,37			
	143	8	80	70	20	0,37			
ASP 15 FX	102	8	100	23	60	0,18	15	0,074	35
	155	8	80	35	40	0,18			
	209	8	80	47	30	0,37			
	310	8	80	70	20	0,37			
ASP 25/15 FX	275	8	80	35	40	0,55	15	0,131	40
	354	8	80	45	31,5	0,75			
	440	8	70	56	25	0,75			
	550	8	60	70	20	0,75			
ASP 25 FX	672	8	80	35	40	0,55	25	0,32	40
	864	8	80	45	31,5	0,75			
	1075	8	70	56	25	0,75			
	1344	8	60	70	20	0,75			
ASP 32 FX	1596	8	100	38	37	1,1	32	0,70	75
	1974	8	70	47	30	1,1			
	2436	8	50	58	24	1,1			
	2940	8	40	70	20	1,1			
ASP 40 FX	2040	8	100	25	56	1,5	40	1,36	110
	2938	8	80	36	39	1,5			
	3672	8	60	45	31,5	1,5			
	5712	8	40	70	20	1,5			
ASP 50 FX	4185	8	100	25	56	2,2	50	2,79	200
	6026	8	60	36	39	2,2			
	7533	8	60	45	31,5	3			
	11718	8	40	70	20	3			
ASP 65 FX	8580	8	80	22	63	4	65	6,50	400
	13650	8	60	35	40	5,5			
	1550	8	60	45	31,5	7,5			
	21840	8	50	56	25	7,5			

MOTOR 3 PH - VOLTS 230/400 HZ 50 R.P.M. 1400 IP55

* = according to hose compound

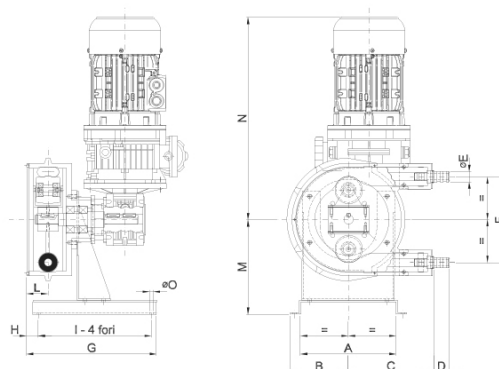
A = suction pressure in m

P = discharge pressure in m

di = inn. diam. pump hose mm

Qu = litres for revolution

Nm = min. start. torque



OVERALL DIMENSIONS MM AND WEIGHT

TYPE	A	B	C	D	E	F	G	H	I	L	M	N	øO	Kg.
ASP 10 VX	210	112	169	25	15	167	251	21	220	40	184	271	7	16
ASP 15 VX	210	112	169	25	20	167	251	21	220	40	184	271	7	16
ASP 25 VX	250	170	224	45	32	240	491	55	400	52	245	170	11	44
ASP 32 VX	330	217	290	66	40	316	655	114	520	68	300	217	11	80
ASP 40 VX	420	270	340	73	50	398	735	130	580	74	370	270	14	120
ASP 50 VX	420	330	380	80	65	512	833	158	650	88	440	330	14	160
ASP 65 VX	566	440	510	91	80	672	1107	142	930	106	570	440	17	430

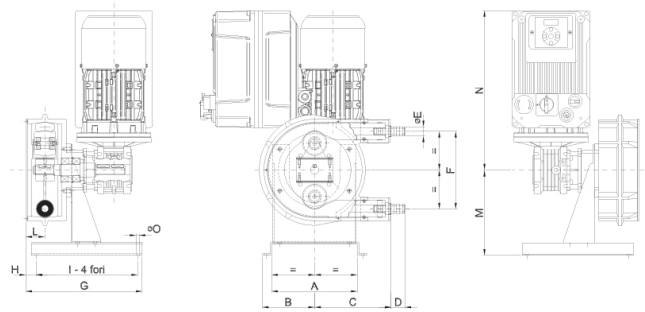
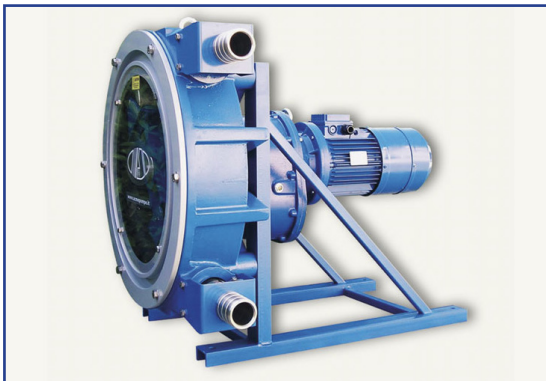
TECHNICAL CHARACTERISTICS

TYPE	Q (L/H)	A	P	RPM	I	KW	di	Qu	Nm
ASP 10 VX	6,5÷30,6	8	100	3,2÷15	60	0,22			
	9,6÷46	8	100/70	4,7÷22,5	40	0,22	10	0,034	35
	15,5÷77,5	8	100/60	7,6÷38	25	0,37			
	14 26÷129	8	100/50	12,7÷63,3	15	0,37			
ASP 15 VX	14,2÷66,6	8	100	3,2÷15	60	0,22			
	21÷100	8	100/70	4,7÷22,5	40	0,22	15	0,074	35
	34÷168,7	8	100/60	7,6÷38	25	0,37			
	56,4÷281	8	100/50	12,7÷63,3	15	0,37			
ASP 25/15 VX	37÷196,5	8	100/60	4,7÷25	40	0,37			
	60÷314,4	8	100/60	7,6÷40	25	0,75	15	0,131	40
	94,3÷487,3	8	100/50	12÷62	16	0,75			
	118÷629	8	100/40	15÷80	12,5	0,75			
ASP 25 VX	90÷480	8	100/60	4,7÷25	40	0,37			
	146÷768	8	100/60	7,6÷40	25	0,75	25	0,32	40
	230÷1190	8	100/50	12÷62	16	0,75			
	288÷1536	8	100/40	15÷80	12,5	0,75			
ASP 32 VX	210÷1134	8	100/60	5÷27	37	1,1			
	319÷1680	8	100/60	7,6÷40	25	1,1	32	0,70	75
	504÷2604	8	50	12÷62	16	1,1			
	630÷3360	8	100/40	15÷80	12,5	1,1			
ASP 40 VX	342÷1811	8	100/60	4,2÷22,2	45	1,5			
	489÷2611	8	100/60	6÷32	31,5	1,5	40	1,36	110
	775÷4080	8	100/50	9,5÷50	20	1,5			
	979÷5059	8	100/40	12÷62	16	2,2			
ASP 50 VX	703÷3716	8	100/60	4,2÷22,2	45	2,2			
	1004÷5356	8	100/60	6÷32	31,5	2,2	50	2,79	200
	1590÷8370	8	100/50	9,5÷50	20	3			
	2008÷10378	8	100/40	12÷62	16	3			
ASP 65 VX	1638÷8658	8	100/60	4,2÷22,2	45	4			
	2340÷12480	8	100/60	6÷32	31,5	5,5	65	6,50	400
	2964÷15600	8	100/50	7,6÷40	25	7,5			
	3705÷19500	8	100/40	9,5÷50	20	7,5			

MOTOR 3 PH - VOLTS 230/400 HZ 50 R.P.M. I400 IP55

* = according to hose compound
A = suction pressure in m
P = discharge pressure in m

di = inn. diam. pump hose mm
Qu = litres for revolution
Nm = min. start. torque



OVERALL DIMENSIONS MM AND WEIGHT

TYPE	A	B	C	D	E	F	G	H	I	L	M	N	øO	Kg.
ASP 10 FX	210	112	169	25	15	167	251	21	220	40	184	345	7	25
ASP 15 FX	210	112	169	25	20	167	251	21	220	40	184	345	7	25
ASP 25 FX	250	170	224	45	32	240	560	55	400	52	245	310	11	54
ASP 32 FX	330	217	290	66	40	316	655	114	520	68	300	295	11	90
ASP 40 FX	420	270	340	73	50	398	830	130	580	74	370	330	14	130
ASP 50 FX	420	330	380	80	65	512	833	158	650	88	440	330	14	170
ASP 65 FX	566	440	510	91	80	672	1107	142	930	106	570	440	17	430

TECHNICAL CHARACTERISTICS

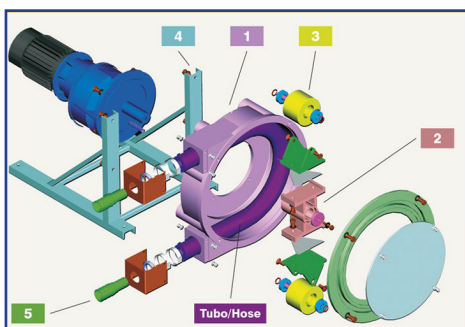
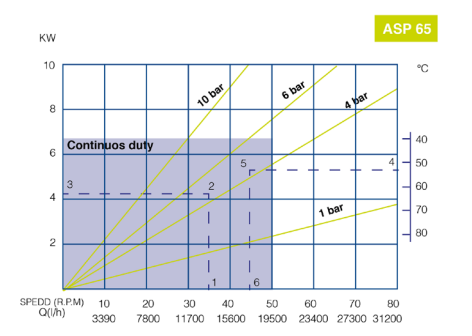
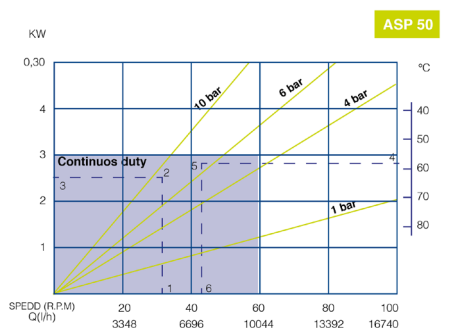
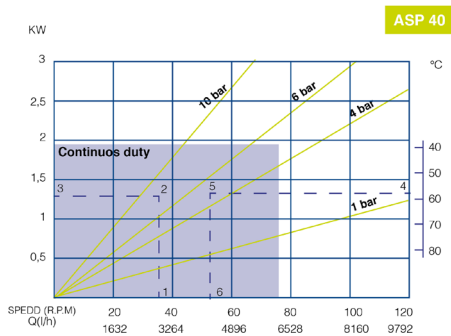
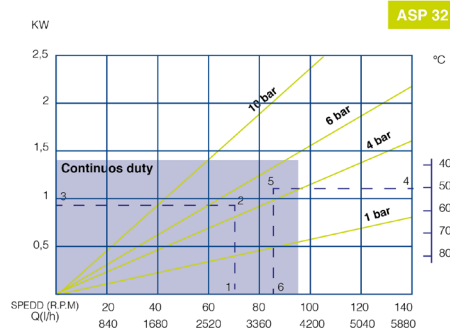
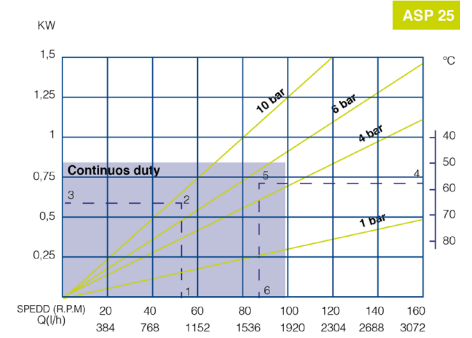
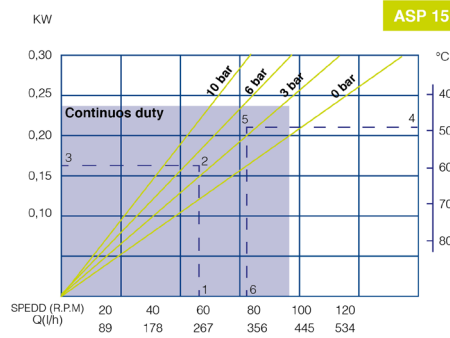
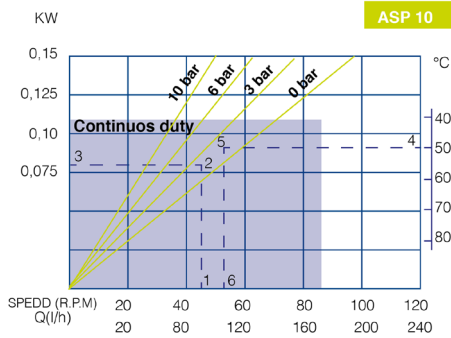
TYPE	Q (L/H)	A	P	RPM	I	KW	di	Qu	Nm
ASP 10 IX	9÷65	8	100/80	4,5÷32	60	0,37			
	19÷130	8	100/60	9,3÷65	40	0,37	10	0,034	35
	28,5÷200	8	100/50	14÷98	20	0,37			
ASP 15 IX	20÷142	8	100/80	4,5÷32	60	0,37			
	41,3÷289	8	100/60	9,3÷65	30	0,37	15	0,074	35
	62÷435	8	100/50	14÷98	20	0,37			
ASP 25/15 IX	55÷385	8	100/80	7÷49	60	0,75			
	71÷495	8	100/60	9÷63	30	0,75	15	0,131	40
	110÷870	8	100/50	14÷98	25	0,75			
ASP 25 IX	134÷940	8	100/80	7÷49	40	0,75			
	173÷1210	8	100/60	9÷63	31,5	0,75	25	0,32	40
	268÷1880	8	100/50	14÷98	20	0,75			
ASP 32 IX	294÷2058	8	100/80	7÷42	40	1,5			
	390÷2730	8	100/50	9,3÷65	31,5	1,5	32	0,70	75
	588÷4116	8	100/40	14÷98	20	1,5			
ASP 40 IX	408÷2856	8	100/80	5÷35	46	1,5			
	734÷5140	8	100/50	9÷63	30	2,2	40	1,36	110
	938÷6528	8	100/40	11,5÷80	20	2,2			
ASP 50 IX	837÷5860	8	100/80	5÷35	56	2,2			
	1507 ÷10546	8	100/50	9÷63	31,5	3	50	2,79	200
	1925÷13395	8	100/40	11,5÷80	24,5	4			
ASP 65 IX	1720÷12090	8	100/80	4,4÷31	56	5,5			
	2730÷19110	8	100/50	7÷49	31,5	7,5	65	6,50	400
	3510÷24570	8	100/40	9÷63	24,5	7,5			

MOTOR 3 PH - VOLTS 230/400 HZ 50 R.P.M. I400 IP55

* = according to hose compound
 A = suction pressure in m
 P = discharge pressure in m

di = inn. diam. pump hose mm
 Qu = litres for revolution
 Nm = min. start. torque

PERFORMANCE CURVES



Standard couplings DIN, TRI-CLAMPS, ANSI, ecc. PVC PTFE Polypropylene

Element	Material
1	Pump casing aluminium alloy
2	Rotor aluminium alloy
3	Rollers aluminium alloy nylatron
4	Base iron
5	Standard couplings AISI 304

fluimac[®]

pump solution



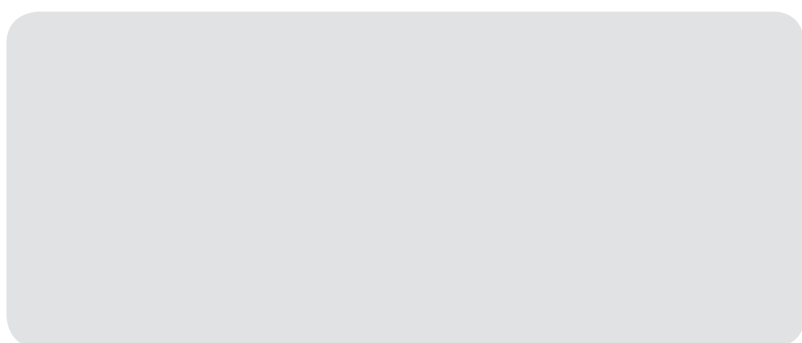
FLUIMAC S.r.l.

Via Ticino 2 / 4
21043, Castiglione Olona (VA) - Italy
Tel.:+39 0331 866688
Fax:+39 0331 864870

www.fluimac.com
info@fluimac.com



AUTHORIZED PARTNER:



Made in Italy